

JOSEF LEBOVIC GALLERY

34 Paddington Street (PO Box 453), Paddington, Sydney, NSW 2021, Australia

Tel: (02) 9332 1840 ♦ Fax: (02) 9331 7431 ♦ International: (+61-2)

Email: josef@joseflebovicgallery.com ♦ Website: www.joseflebovicgallery.com

Gallery hours: Wednesday to Friday 1-6pm; Saturday 11-5pm or by appointment

ABN 15 800 737 094 • Established 1977. • Member of International Fine Print Dealers Association

• Association of International Photography Art Dealers Inc • Australian Antique Dealers Association

COLLECTORS' LIST No. 109, 2004

Australian Art

Drawings, Oil Paintings, Prints, Sculpture, Watercolours

Compiled by Josef & Jeanne Lebovic, Jahnvi Vinden-Clark

On exhibition from Wednesday, 26 May to Saturday, 3 July and on our website from Saturday, 5 June.

All prices are in Australian dollars and include GST. All works are mounted and unframed, unless otherwise noted.

Items marked ♦ have been illustrated in this catalogue. Exch. rates as at time of printing: AUS \$1.00=US \$0.70¢; UK £0.40p.

© Licence by VISCOPY AUSTRALIA 2004 LRN 5523

- 1 **Anon.** [*Darling Harbour*], 1902. Pencil drawing with watercolour, annotated and dated "Sydney. 1 Julie 1902", and signed "P. Vot"? lower right, 21.6 x 33.8cm. *Framed.*
JLG4210 **\$1,250**
- 2 **Anon.** [*Lord Howe Island*], 1950s-1960s. Panoramic silver gelatin photograph, consisting of five panels, 10 x 53cm overall. Together with "Tourist's Map of Lord Howe Island", letterpress front and back, 25.3 x 19.2cm and five silver gelatin photographs in postcard format, approx. 14.2 x 9cm each. JLG4254 **\$1,100**
The panorama appears to be taken from Transit Hill, and the postcards cover Ned's Beach, the island's community hall, Eastern Cliffs and views from the lagoon.
- 3 **Anon.** [*Sydney Harbour, Neilson Park*], 1892. Watercolour, initialled "RRM" and dated lower right, 20.4 x 30.4cm. *Minor foxing, laid down on original backing. Early 20th-century frame.* JLG4266 ♦ **\$1,100**
- 4 **Anon.** *The Right Hon. Richard Earl Howe . . .*, 1794. Mezzotint, titled (with text) in plate below image, published by John Fairburn, London, 35.6 x 25.4cm. *Slightly soiled.*
JLG3772 ♦ **\$1,690**
Title continues: ". . . Admiral of the White, Vice Admiral of England, and Commander in Chief of the Grand Fleet in the Channel". Text continues with a description of a battle with the French. An island off the coast of Queensland was named after Lord Howe.
- 5 **Adam Gustavus Ball** (1821-1882). [*Emu Hunt*], 1868. Pencil drawing, initialled and dated lower centre, 30 x 47cm. *Framed.* JLG4170 ♦ **\$2,900**
- 6 **Vera Blackburn** (1911-1991). *Lake of Swans*, 1935. Linocut, edition of 10, initialled in block, titled, signed and dated, 30.4 x 24.7cm. *Minor foxing in margins.* JLG3321 ♦ **\$3,900**
Butler #12. Inspired by the ballet "Swan Lake", this is Black's most important image.
- 7 **Arthur Boyd** (1920-1999). *Daphne (from "Electra" backdrop)*, 1962/63. Etching and aquatint, proof and signed in margin below, 35.4 x 40.3cm. JLG3765 ♦ **\$2,800**
Illustrated in "Arthur Boyd: etchings and lithographs", Maltzahn Gallery Ltd, London, 1971, plate 16.
- 8 **Arthur Boyd** (1920-1999). [*Pelican and Artist*], c1970s. Etching and aquatint, numbered 25 and signed in margin below, 60.4 x 42.4cm. JLG3939 ♦ **\$1,800**
- 9 **Arthur Boyd** (1920-1999). [*Walking Figure*], 1970s. Lithograph, numbered 31/90 and signed in margin below, 45 x 67cm. JLG3477 ♦ **\$2,500**
- 10 **O. Brock.** *Harems Ain't Everything*, c1910. Watercolour, signed lower right, titled below, 32 x 14.7cm. *Old mount burn and glue stains to margins.* JLG4243 ♦ **\$990**
- 11 **Horace Brodzky** (1885-1969). *Harlesden NW10*, 1934. Pen and ink drawing, signed and dated lower left, titled lower right, 31.2 x 24.8cm. JLG2788 ♦ **\$1,650**
- 12 **Horace Brodzky** (1885-1969). [*Portrait of Ezra Pound*], 1943. Pen and ink drawing, signed and dated lower right, 28.3 x 24.7cm. *Framed.* JLG2786 **\$1,650**
- 13 **Horace Brodzky** (1885-1969). [*Nude*], 1944. Sepia drawing, signed and dated lower right, 25.5 x 21cm. *Slight foxing.*
JLG4125 **\$990**
- 14 **Horace Brodzky** (1885-1969). [*Portrait of a Lady*], 1945. Pen and ink drawing, signed and dated lower left, 31.5 x 22.5cm. *Framed.* JLG2787 ♦ **\$1,650**
- 15 **David Bromley** (b. 1960). *Boy Drawing*, 2003. Colour silkscreen, numbered 20/40 and signed lower left, 75 x 53.9cm. *Framed.* JLG4220 ♦ **\$1,650**
Different colour-ways were used through this edition.
- 16 **H.H. Calvert** (active NSW, c1900-1920s). [*Male Riflebird*], 1920. Watercolour, signed and dated lower right, 59 x 94.5cm. *Framed.* JLG4253 ♦ **\$2,200**
- 17 **Neville H.P. Cayley** (1854-1903). [*Two Kookaburras Sitting in an Old Gum Tree*], 1893. Hand-coloured lithograph, signed and dated with a line of printed text in image lower right, 62 x 47.3cm. *Discolouration and paper loss to edges from old mount.* JLG4251 ♦ **\$1,250**
Text reads: "Australian Birds: Published by W. Aldenhoven, Sydney. Copyright No. 1".
- 18 **Neville H.P. Cayley** (1854-1903). [*Magpie*], 1897. Watercolour, signed and dated lower right, 62.1 x 47.9cm. *Minor stains, repaired tears and holes to sky and background.*
JLG4249 ♦ **\$1,850**

106 Alfred Wishart Walter (1887-1964). *Sydney Harbour*, c1930s. Oil painting, signed lower right, 35 x 45cm. *Original hand-carved frame*. JLG4174 ♦ \$1,100

107 Edward A. Warner (1879-1960). *The Distant Road*, 1920s. Etching, titled, numbered 17/60 and signed in margin below, 20 x 27.8cm. JLG3913 \$990

108 Edward A. Warner (1879-1960). *Tweed River Flats*, 1920s. Etching, titled, numbered 17/60 and signed in margin below, 18.9 x 26cm. JLG3910 \$880

109 Edward A. Warner (1879-1960). [*Macquarie Street, Sydney*], 1920s. Etching, numbered 37/60 and signed in margin below, 20.8 x 40cm. *Stains to edges, repaired portions to margins*. JLG1727 ♦ \$1,650
Depicts the eastern side of Macquarie Street showing the Mint and the Hyde Park Barracks buildings.

110 Edward A. Warner (1879-1960). *The Loaded Wagon*, 1924. Etching, monogrammed with number "24" in plate lower left, titled, numbered 8/75 and signed in margin below, 19.9 x 30.1cm. JLG3914 \$990

111 Edward A. Warner (1879-1960). [*Logging*], 1935. Etching, dated and signed in plate lower left, numbered 33/50 and signed in margin below, 18.5 x 23.1cm. JLG3496 ♦ \$990

112 Harry J. Weston (1874-?). [*Fishermen in Harbour*], 1924. Watercolour, signed and dated lower right, 28.5 x 27.3cm. *Slight loss and minor discolouration to edges*. JLG4238 ♦ \$2,800

113 Unk White (1900-1986). *The Ark Tennis Singles Championship*, c1920s. Ink and watercolour, signed in image lower right, titled in margin below, 41.7 x 32.8cm. *Minor surface dirt to margins, small indentation in margin below lower right*. JLG4115 ♦ \$1,300

114 Fred Williams (1927-1982). *The Bath*, 1956. Etching, 1st state, numbered 5/6, signed and dated in margin below, 17.6 x 12.6cm. *Framed*. JLG1847 \$3,500
Mollison #99. There were four states - the plate was trimmed (right side) for the 2nd state. This impression is from the first state which is the only uncut version.

115 Fred Williams (1927-1982). *Wild Dog Creek I*, 1970s. Lithograph, numbered 41/50, titled and signed in margin below, 62 x 46cm. JLG4180 ♦ \$1,900

116 William Hardie Wilson (1881-1955). [*City View Framed by Archway*], c1920s. Watercolour, signed lower right, 25.8 x 21.8cm. JLG2558 \$2,900

Sculpture

Dimensions are expressed in centimetres, given as height x width x depth.

117 Nelson Illingworth (1862-1926). *Vulcana*, 1904/2002. Bronze, numbered 2/15, title incised on base, signature and date incised on base verso, edition and foundry name stamped into base verso, 46 x 37.5 x 32cm. JLG4286 \$12,000

Art Nouveau sculpture produced in Australia seldom appears in the Australian art market. This bronze was cast by Meridian in Melbourne from the artist's original plaster in a traditional bronze patina. Issued by Josef Lebovic Gallery and Scheduling-Berry Fine Art, the bronze will be cast on demand until the edition of 15 has been completed. "Vulcana" was created by one of the leading Australian sculptors working in the latter part of the 19th century. Illingworth, a colourful bohemian, was known mainly for his busts of prominent citizens including Henry Parkes and Sir Edmund Barton. We believe the inspiration for this bronze was Kate Roberts ("Vulcana"), a famous lightweight strongwoman who was performing feats of strength in London and Australian music halls during the early 1900s.

118 Ralph Trafford Walker (1912-2003). *Pointing the Irna, Arundta Tribe*, 1942. Plaster relief sculpture, light-green patina, title incised upper right, 41.8 x 34.3cm. *Slightly rubbed*. JLG3803 \$1,900

This sculpture is the plaster cast for one of the 16 relief panels that were cast in bronze for the western doors of the State Library of New South Wales. In 1941 Walker was commissioned by the State Library to create a series depicting the Australian indigenous people of the Western Desert to decorate the doors of the main entrance, which were completed in 1942.

Susan Dorothea White (b. 1941) is a painter, sculptor, and printmaker. Over a career spanning more than 40 years she has produced a large body of work in diverse media. Born in Adelaide, she grew up in outback Broken Hill and commenced full-time studies at the South Australian School of Art in 1959 before moving to Sydney to continue studies at Julian Ashton's. Her first solo exhibition was held in Broken Hill in 1962, followed by solo shows in Adelaide, Sydney, Munich, Amsterdam, Cologne, and New York. She has represented Australia in numerous international biennales and exhibitions. Her work is represented in collections worldwide including the National Gallery of Australia and the Hechinger Collection (Washington DC).

Her rendering is simple and clear, readily interpreted. Symbolism rather than situation portrayal typifies White's style... *Close-knit Family* - family members' heads are "knitted" together... *Shy Egg* is attempting to conceal itself, and *Stretching the Imagination* depicts distorted features - stretched eye sockets.

Dorothy Roatz Myers, *Art Talk*, New York

Her ability... results in some of the most emotionally jarring imagery in recent art. She also is a strong social satirist.

Andrew Margolis, *Gallery & Studio*, New York

119 *Shunga I*, 1988. Bronze, numbered 2/9 (under male left foot) and signed (in original clay near female right leg), 11 x 17 x 11cm. JLG4273 ♦ \$3,500

120 *Shunga II*, 1988. Bronze, numbered 3/9 (under male right foot) and signed (in original clay near male right foot), 10 x 24 x 10cm. JLG4274 ♦ \$4,400

121 *The Shy Egg*, 1989. Bronze, numbered 4/5 and signed (underneath), 12 x 8 x 8cm. JLG4275 ♦ \$5,500

122 *Close-knit Family*, 1990. Bronze, numbered 3/7 and signed (on underside of mother's head), 17 x 23 x 17cm. JLG4276 ♦ \$5,500

123 *Atlass*, 1992. Bronze, numbered 4/7 (near left foot) and signed (in original clay on base), 32 x 15 x 15cm. JLG4277 ♦ \$5,500

124 *Stretching the Imagination*, 1994. Bronze, numbered 4/10 and signed (under right hand), 7 x 21 x 7cm. JLG4278 ♦ \$6,600

125 *The Spirit of the Willy-Willy Wind*, 1995. Bronze, numbered 6/7 and signed (on sole of left foot), 63 x 32 x 20cm. *Marble base*. JLG4279 ♦ \$11,000

126 *To Cut Both Ways*, 1995/96. Steel scissors, bronze, chrome-plate, numbered artist's proof 1/2 (near rear of screw) and signed (at base of thumb), 6 x 37 x 15cm. JLG4280 \$5,500

127 *The Porter Angel at the Gates of Purgatory*, 1996. Bronze, chrome-plate key, gold-plate key, numbered artist's proof II and signed (on side of base), 33 x 30 x 15cm. JLG4281 ♦ \$4,400
Inspired by Dante's *Divine Comedy*.

128 *Sheela Pod*, 1997. Bronze, numbered 2/9 and signed (on base), silver patina, 21 x 15 x 13cm. JLG4282 ♦ \$3,500

129 *The Dance of Eternity or Torso-less Performing a Möbius Strip*, 1998. Bronze, numbered 2/9 and signed (under left forearm), 38 x 24 x 15cm. *Marble base*. JLG4283 ♦ \$5,500

130 *The Soprano*, 1998. Bronze, numbered 2/9 and signed (under rear of arc), 60 x 20 x 15cm. *Marble base (20 x 8 x 8cm.)* JLG4284 ♦ \$5,500

131 *Coming Out of One's Shell*, 1999. Bronze, numbered 3/12 and signed (behind head), 17 x 14 x 13cm. JLG4285 ♦ \$4,400



129



128



125



127



130



124



131



120



123



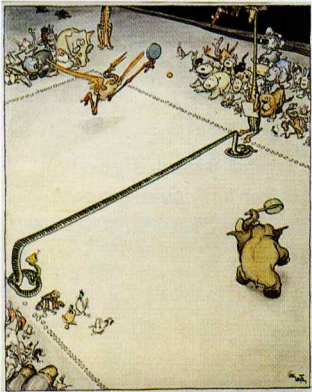
122



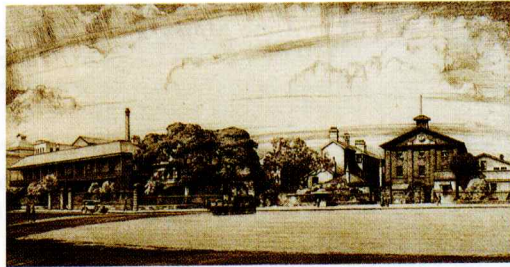
119



121

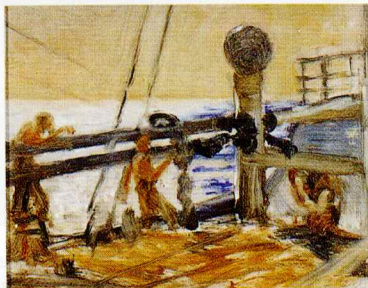


113

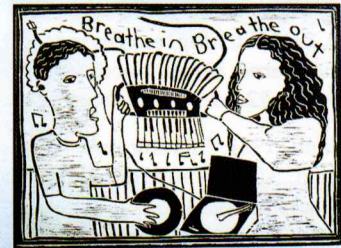


109

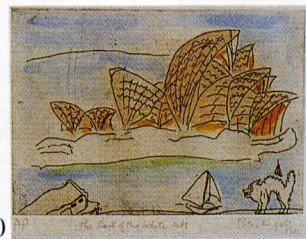
100



102



44



40



105



112



115



104



104