

DUNGOG - IN THE FOOTHILLS OF THE BARRINGTONS



Celebrating the arts, local food and rural life

www.visitdungog.com.au

sculpture
on the farm



2018



"Fosterton" 824 Fosterton Road Dungog NSW 2420

Gala Opening - Friday 28 September
Saturday 29 September to Monday 1 October

www.sculptureonthefarm.com

Philippa Graham

www.sculptureonthefarm.com
pdgraham@graers.com
+61 (0) 407 202 838

"Fosterton" 824 Fosterton Road, Dungog, NSW, 2420



Supported by the



RELIANCE MOTOR COMPANY



Welcome from the NSW Government

On behalf of the NSW Government, welcome to the inaugural **Sculpture on the Farm** exhibition in Dungog.

The NSW Government is proud to support this exhibition at the picturesque farm, "Fosterton", through its tourism and major events agency, Destination NSW.

This is an exciting event and a unique tourism concept for the region. Tourism is essential to the economies of regional NSW and this event will add a new, cultural element to the overall experience of touring the Dungog region.

Sculptors from all over Australia have contributed works to this prestigious event, and the significant acquisitive prize will extend the benefits of **Sculpture on the Farm** to the whole Dungog Shire beyond the four days of the exhibition.

I'd like to thank all the volunteers and committee members involved in the staging of this wonderful event and to all the sculptors, thank you for your creativity and I wish you all great success.

The Hon. Adam Marshall MP
Minister for Tourism and Major Events



In early 2018 a committee for the not for profit **Sculpture on the Farm Inc** came into being and its five members enthusiastically embraced a mission statement which nurtures the importance of a strong and engaged community ...

"Sculpture on the Farm Inc will engage with sculptors, the local community of Dungog and the broader community to encourage participation in and understanding of the arts, in particular sculpture. An exhibition of sculpture and other events may be held from time to time in the Dungog region to raise awareness of public sculpture and to raise funds to further the association's objects, including the possible purchase of public sculpture for the community."

In line with this mission, as chair of **Sculpture on the Farm Inc.**, I am very proud to have brought this inaugural exhibition to fruition as a partner event in association with the 2018 Dungog Festival.

We are thrilled to present in 2018 one hundred works by sculptors from New South Wales, including sculptors from the Dungog Shire, Queensland, Victoria, Tasmania and the Australian Capital Territory.

Everyone attending this exhibition is a very welcome visitor to "Fosterton" and we hope that you will go home with an enduring and increased appreciation of the importance of sculpture in the public domain.

Along with my husband, John, we certainly hope that you enjoy your visit to "Fosterton" and that you will return to the Dungog region before too long.

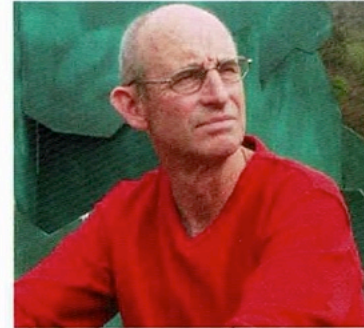
Philippa Graham
Chair
Sculpture on the Farm Inc

"Fosterton"
824 Fosterton Road,
Dungog, NSW 2420

Sculpture on the Farm Judging Panel 2018

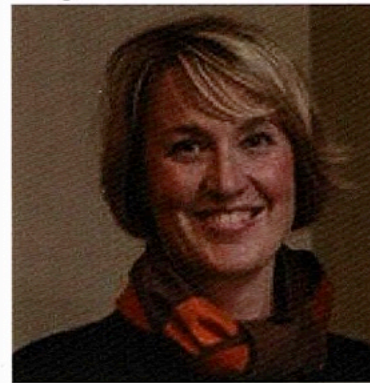
An eminent artist, a progressive gallery director and a leader in development of local communities - all with a strong commitment to the arts in regional communities.

Paul Selwood



Paul Selwood based in Wollombi, is one of Australia's preeminent sculptors, creating beautifully fluid, complex works, often from a single sheet of steel, through his cut and fold technique. Artist and Government Architect, Peter Poulet, recently wrote, "Paul exemplifies and has given me an unwavering belief in the power of the sculptor and sculpture to speak to us viscerally and this commitment and passion is evident in a lifetime of evolution, excellence and acknowledgements.

Brigette Uren



Brigette Uren Director of the Maitland Regional Art Gallery is highly regarded as a relationship builder who achieves win-win outcomes for the regional communities she serves. Based in Vacy with a young family, Brigette works to achieve outstanding business results and engagement levels for museums and galleries, implementing innovative artistic programs, driving philanthropic opportunities, and connecting communities to robust cultural product, several times to award winning standard.

Coralie Nichols



Coralie Nichols General Manager, Dungog Shire Council has worked in NSW, the NT and Queensland predominantly in local government and the not for profit sector. Coralie was a finalist in the 2017 Telstra Business Women's Awards. Dungog Mayor Tracy Norman said Coralie "has a unique and broad base of skills that includes executive leadership, lobbying and advocacy, community engagement, organisational transformation and change management". She has a keen interest in th

Program

Friday 28 September:

5pm Gala Opening

6pm Official opening by Brigette Uren,

Director of the Maitland Regional Art Gallery

Announcement of the prizes by judge Paul Selwood

- **Sculpture on the Farm Acquisitive Prize \$10,000**
- **The Bloomfield Prize \$500**
- **The Sculptors Society Prize for Indoor Work \$300**

Announcement of **The Norco Prize for local Dungog Shire Artist \$200**

- Coralie Nichols, General Manager of Dungog Shire Council

Saturday 29 September and Sunday 30 September:

9am Exhibition opens - Entry \$5, Catalogue \$5

Sculpture rambles with artist Pennie Pomroy throughout the day as she chats with sculptors about their works

5pm Exhibition closes

Monday 1 October:

9am Exhibition opens - Entry Free

11am Announcement of the **Sculpture on the Farm People's Choice Award** by Dungog Councillor John Connors

12 noon Exhibition closes

Collection of Sculptures

Purchasers and sculptors please collect your works at 12 noon on Monday 1 October, unless prior arrangements have been made.

Acknowledgement of our Supporters

Sculpture on the Farm Inc is very grateful for the important support received from:

Destination NSW, Crawford's Casting, Farmers Warehouse, Dungog Kitchens, Dungog Shire Events, Boydell's Winery, Australian Galleries, The King Family, The Bloomfield Group, The Sculptors Society, Reliance Motors, Norco Rural, Tinshed Brewery, Dungog Rotary, Hilldale Union Church Committee, Dungog Rural Fire Service, GJWear Training, Robyn Werkhoven.

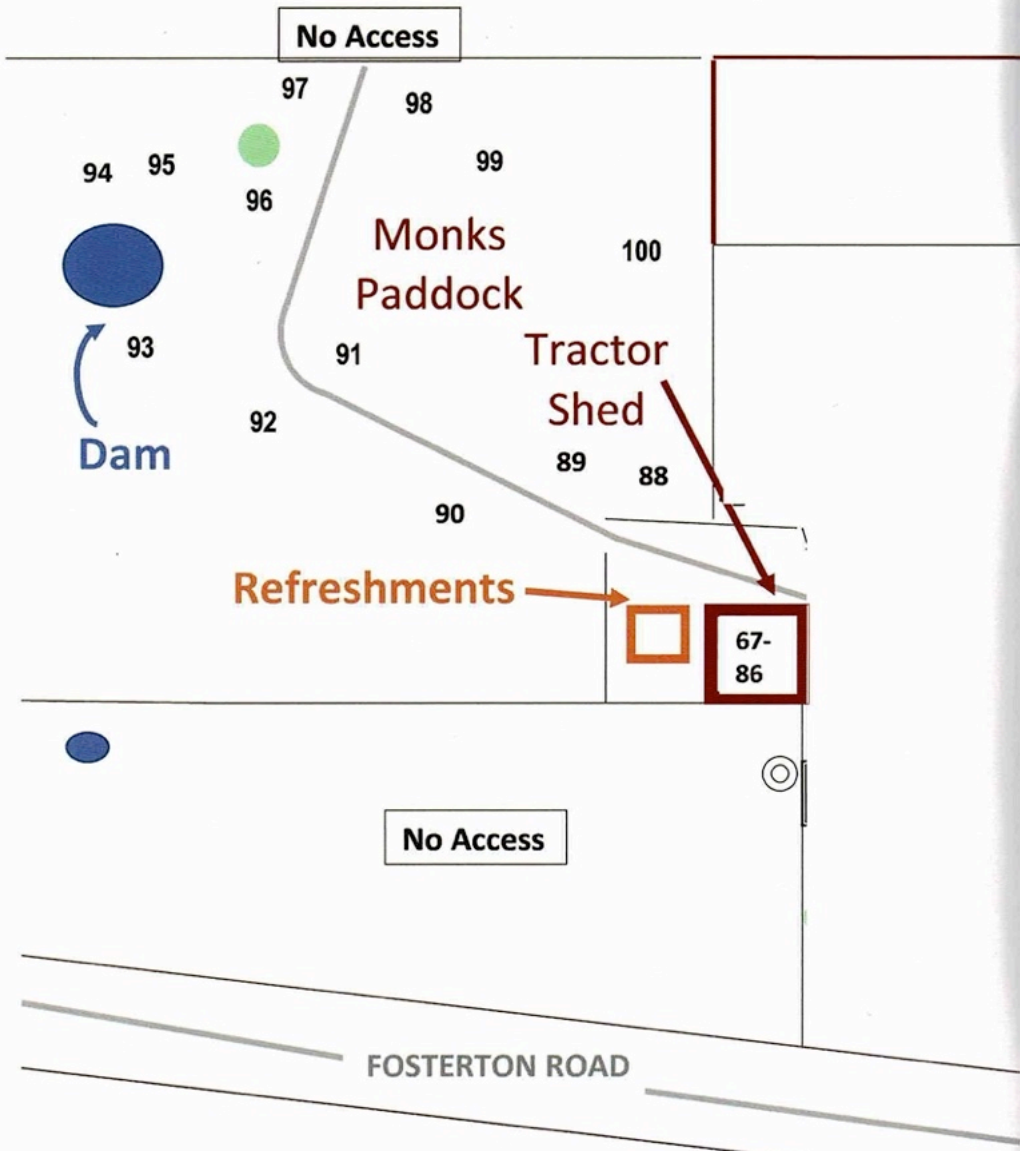
A special thank you to all sculptors who expressed their confidence in the mission of Sculpture on the Farm in its inaugural year.

The many Sculpture on the Farm Volunteers, including Jane Chandler, Jane Stephenson, Penny Kater, Cathy Oliver, Jenny Creal, Chris Erby, Cas Addison, Sharon Farrell, Pennie Pomroy, Michele Myers, Jenny Robinson, Ted Nobbs and the traffic control volunteers.

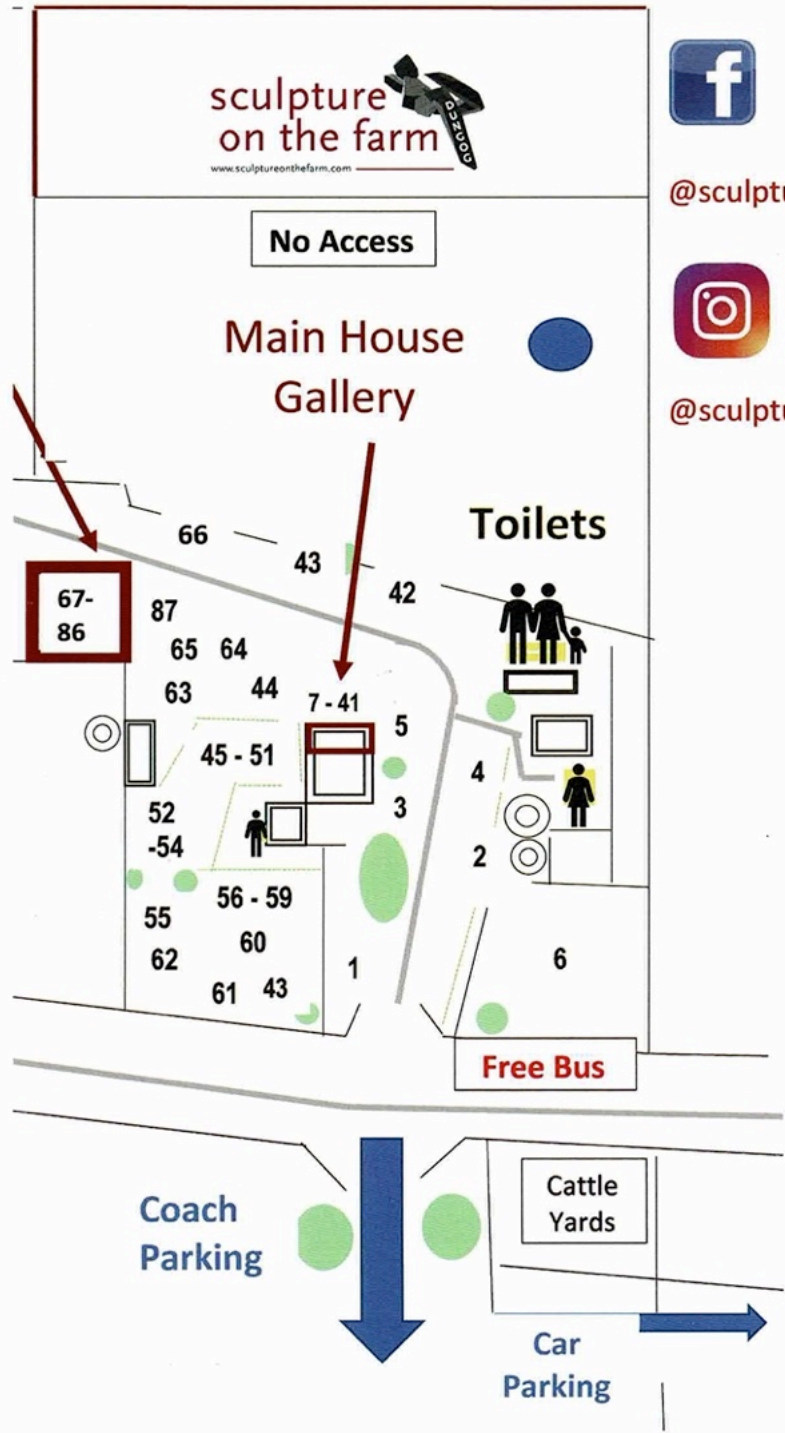


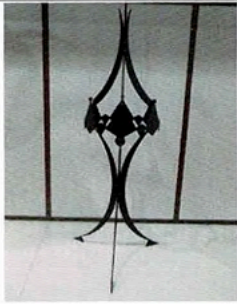
Sculpture on the Farm Committee

Lisa Connors, Philippa Graham, Liz Jones, Philippa Wilson and John Graham



← N
Scale: 1:200





89. Paul Brent

The Jester II

Painted mild steel and Ni Hard steel

\$4,000

Deconstructed plasma cut steel skeletons - the joker becomes the jester!



90. Paul Brent

The Triffid

Stainless Steel

240 x 110 x 90cm

\$6,500

All knowing, all seeing eye.



91. Ionas Kaltenbach

Still Angles

Steel

200 x 60 x 100cm

\$3,000

'Still Angles' aims to capture different dynamics and perspectives, that are all ultimately connected and linked. I was thinking of my family when I designed and built this piece.



92. Gavin Vitullo and Braddon Snape

Voyage

Hessian, wood and beeswax

290 x 20 x 37cm

\$4,500

Curiosity prompts discovery, as we embark on a Voyage of poetic form captured in natural sculpted materials.



93. Susan Dorothea White

Stretching the Imagination

Bronze

57 x 179 x 55cm

\$70,000

Inspired by the idiom 'stretching the imagination', large hands stretch a face into a broad smile. Views through spaces in eye sockets and cheeks spark imagination. The surface is rounded and tactile.



94. Edward Milan

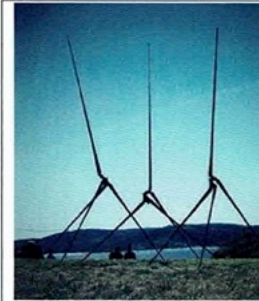
Think Engine

Reclaimed Mixed Media

220 X 175 X 155cm

\$9,000

I try to suggest movement and potential. Not fixed, able to move on and out. I enjoy working at this scale. It feels good.



95. Will Maguire

Contrary man (large)

Forged steel

500 x 400 x 500cm

\$8,000

Inspired by primitive WW1 caltrops, angular confused human forms expressing the tension and contradictions of war.



96. David Stott

The star that fell to earth

Timber/ metal

320 x 160 x 370cm

\$5,400

Stars, domain of astronomers, mathematicians. But what is our experience ... the magical shapes from story books, mythology, science fiction. Magically I present a star. The sheer impossibility ...